

Overview of the New Jersey ePrescribing Action Coalition

Panel Discussion
“ePrescribing Pilot Programs: The Challenges
and Outcomes”

NCPDP Educational Conference

November 14, 2006

“The Medicare Modernization Act: Lessons from the
Trenches; Opportunities for the Future”

NJ ePrescribing Action Coalition

- RAND Health
- Horizon Blue Cross Blue Shield of New Jersey
- Caremark (iScribe, PBM, Mail Order)
- Allscripts
- RxHub
- SureScripts
- UMDNJ
- Point-of-Care Partners

Foundation & Initial Standards

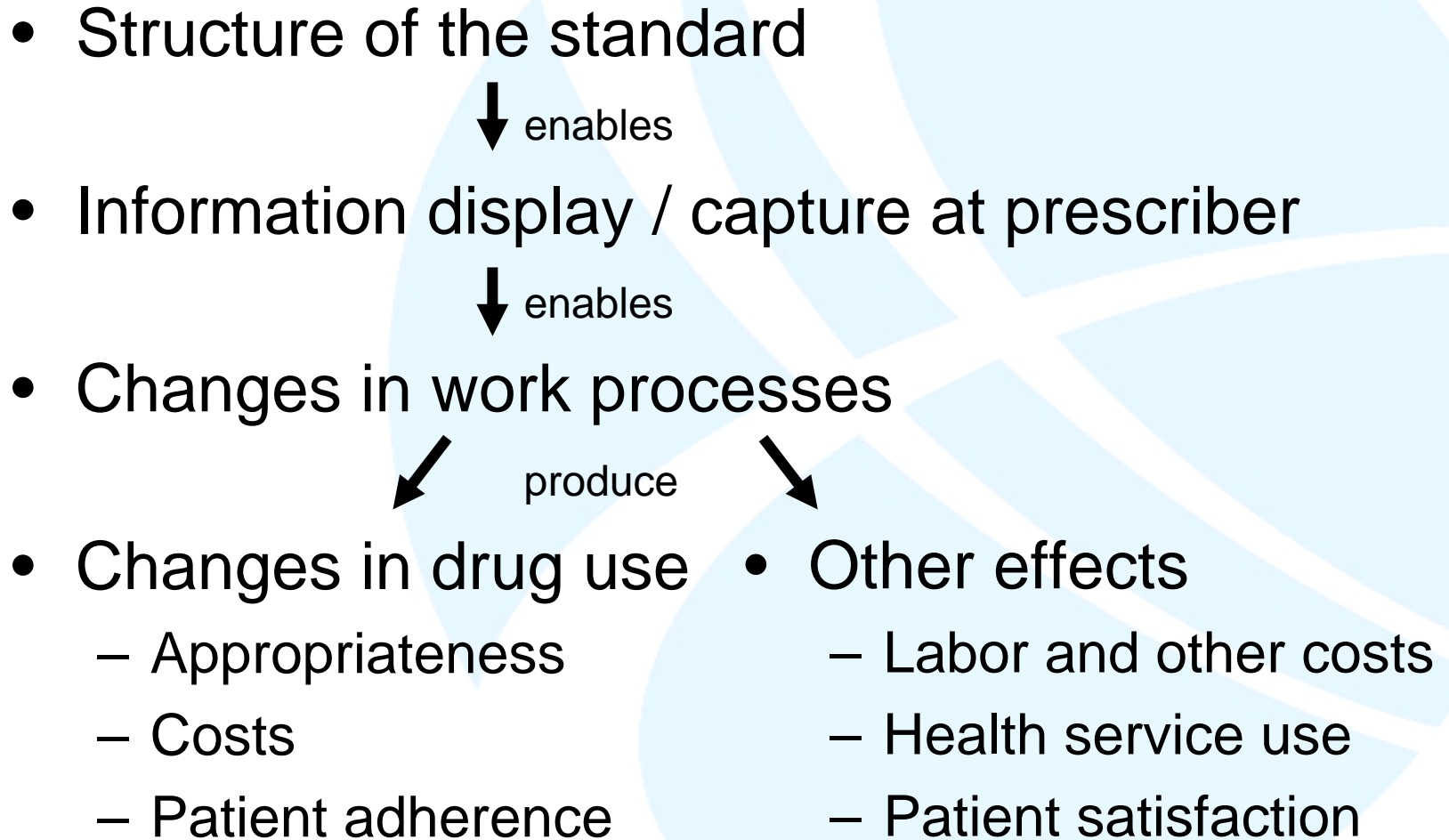
Foundation Standards

- SCRIPT (new Rx, renewal, change, cancel, admin functions)
- ASC X12N 270/271
- NCPDP Telecommunication

Initial Standards

- Medication History
- Formulary & Benefits
- Structured & Codified SIG
- Prior Authorization (X12N 278)
- RxNorm (new Rx, renewal, cancel)
- SCRIPT (fill status)

Conceptual Model

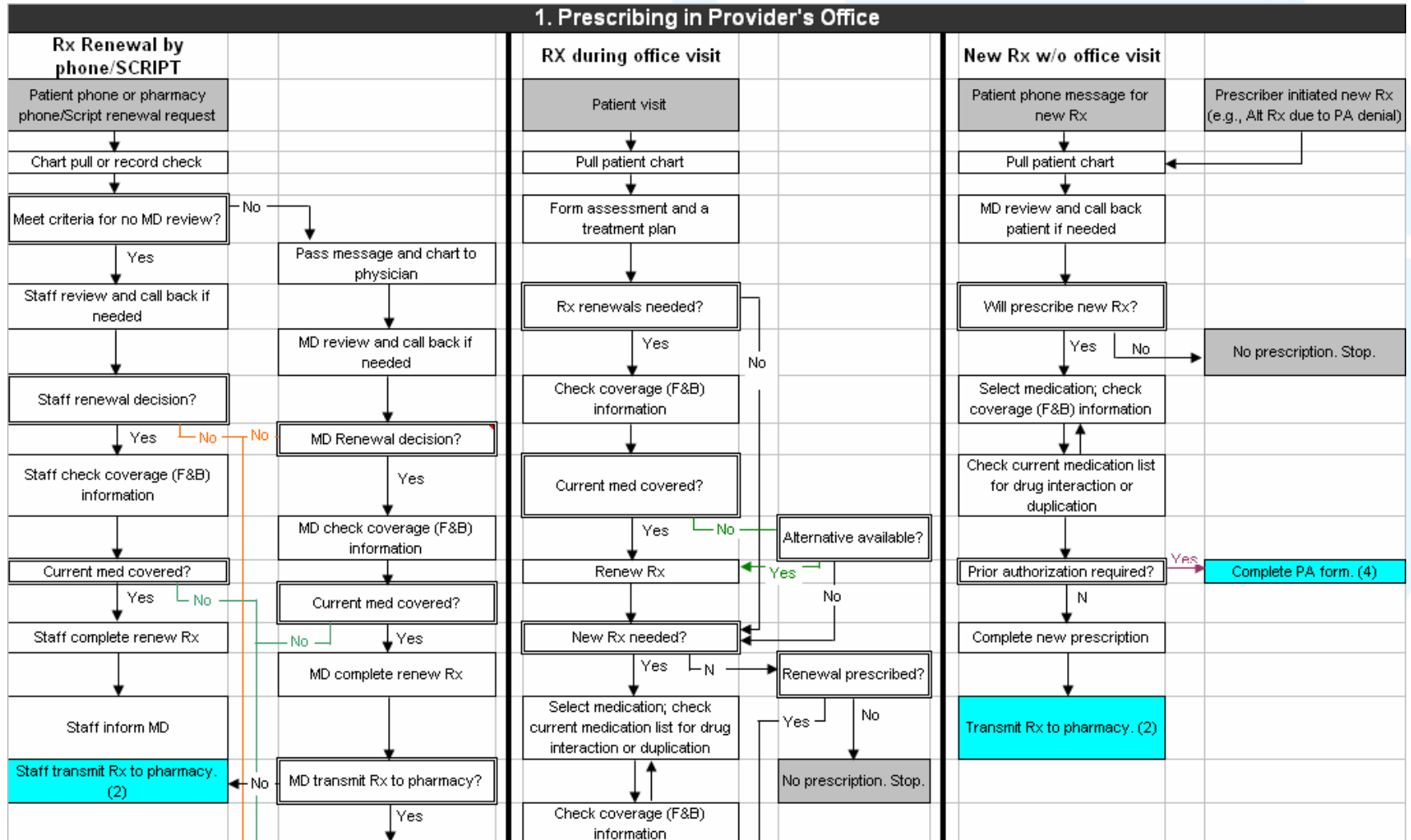


Methods Overview

- All standards:
 - Workflow modeling
 - Technical expert panel
- For Med Hx, F & B:
 - Site visits before & after eRx
 - Provider
 - Pharmacy
 - Claims data analysis before & after eRx
 - Prescriber survey
- For Fill status:
 - Focus group evaluation of storyboard prototypes
- For Prior authorization:
 - Prescriber use of a working prototype
- For RxNorm, Sig:
 - Lab evaluation

Workflow process modeling

1. Prescribing in Provider's Office



Technical Expert Panel

Category		Company	Primary Contact
Point of care software vendors	EHR	Allscripts	Jill Helm, RPh
	eRx	iScribe	Linda Schilling
	eRx	InstantDx	Krishnan Seshadri
	EHR	MedPlus	Rohit Nayak
	eRx	ZixCorp	David Robertson
Content Providers		First DataBank	Tom Bizzaro, RPh
		Wolters Kluwer	Karen Eckert, RPh
Intermediaries		RxHub	Teri Byrne
		SureScripts	Ken Whittemore, RPh
		NDC	TBD
Mail Pharmacies & PBM	Mail	Caremark	Jane Niemtschk
	Mail	Medco	Michele Glynn
	Large Chain	Walgreens	Casey Handal, RPh
Pharmacies	Medium Chain	Ahold/Stop&Shop	Brad Dayton, RPh
	Independent	QS1	Tammy Devine

Prescriber office site visits

- Participants
 - 6 iScribe offices, 6 AllScripts offices
- Data – 3 days before and 2 days after eRx activation
 - Field notes
 - Qualitative interviews
 - Physicians/prescribers
 - Office staff
 - Nurses
 - Telephone logs
 - Direct observation
 - Physician activities during one half-day

Pharmacy site visits

- Participants: 2 pharmacies taking orders from at least one high-volume e-prescriber
- Data
 - Qualitative interviews
 - Work processes
 - Activity logs
 - Telephone call-handling
 - Direct observation
 - interoperability between Rx orders and pharmacy management systems

Prescriber survey

- Measure prescribers' perceptions of how much the information provided by
 - formulary & benefit
 - medication history
 - prior authorization
- is enabling
 - *informed decisions* about *appropriate* and *cost effective* medications
 - office efficiency

Claims data (before vs. after e-Rx)

- Formulary adherence
- Patient adherence to refills
- Errors of commission
 - Top 25 Drug-drug interactions
 - Beers' criteria
- Adverse outcomes
 - ED visits for med-sensitive conditions (CHF, HTN crisis, Asthma)
 - Hospital admissions
- Patient satisfaction (CAHPS results)

Fill Status: Background

- Pharmacy → prescriber message ea. status change
 - Filled & available, returned to stock, filled again, picked up...
 - Enable better patient adherence monitoring
- Controversy
 - Burdensome for pharmacies to generate
 - Clinical value, acceptability uncertain
 - Med History can show whether claim paid
 - Fill status could deliver more proactive info
 - Would prescribers find alerts acceptable?

Fill Status: Methods

- Focus groups
 - Allscripts users
 - Storyboard prototypes for displaying patient adherence information
 - Med Hx information currently available
 - Additional flags that could be generated
 - Alerts based on fill status
 - Elicit perceptions re: acceptance, benefits
 - Excess work, liability, patient privacy

Prior Authorization

- Research questions
 - How will prescribers use electronic PA?
 - Will it improve perceived access to PA meds, when appropriate?
 - How adequate is the proposed standard to represent needed information exchange?
- Methods
 - Implement prototype system for Horizon users
 - iScribe and Allscripts build forms modules
 - RxHub portal accepts “unsolicited” requests
 - Assess use of ePA, prescriber perceptions

RxNorm

- Research Questions
 - Completeness of RxNorm for representing a sample of actual prescriptions
 - What types of drugs are missing?
 - Consistency of RxNorm CUIs chosen by two independent matches on NDC for the same Rx?
- Methods
 - De-Identified 10k New + 10k Renewal Rx's
 - FDB, MediSpan independently matched each to an RxNorm SCD and, in some cases, an SBD